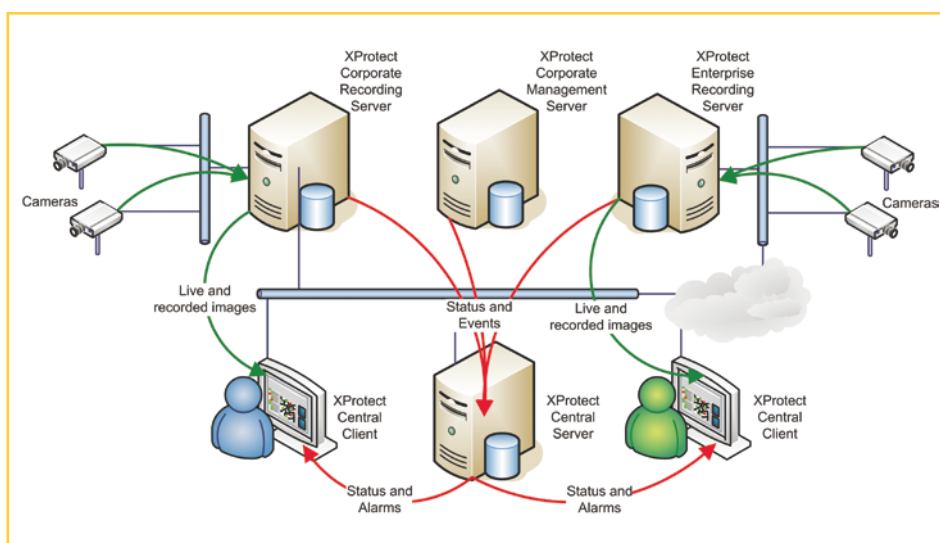




# Milestone XProtect™ Central

ensures optimum operation of your video surveillance installation by providing complete overview of system status and alarms.

Milestone XProtect Central provides continuous monitoring of the operational status and event-triggered alarms from Milestone XProtect Corporate and Enterprise servers, video surveillance cameras and external devices. This powerful solution gives you instant overview of alarms and possible technical problems for immediate visual verification and troubleshooting to resolve incidents fast.



*XProtect Central can integrate with security devices such as intruder or access alarms via camera relay inputs or through software integration. The XProtect Central server receives events and status information from XProtect Corporate and Enterprise installations and presents it on the XProtect Central client screens.*

## KEY BENEFITS:

- ◆ Centralized overview and control allows operators to manage even large video surveillance installations
- ◆ Hierarchical multi-level maps make it easy to identify and navigate to an incident's location and the system entities that are involved
- ◆ Visual and audible alerting supports busy environments like alarm centrals
- ◆ Instant access to servers and camera devices for visual verification allows quick response
- ◆ To spread the workload and provide backup capacity, alarm management can be assigned to multiple simultaneous operators with individual operator rights
- ◆ The broad range of events available for triggering alarms allows customization to fit the demands of each organization
- ◆ Full alarm management provides surveillance operators with the option to acknowledge or reassign alarms, or to 'snooze' specific incidents in case of scheduled maintenance
- ◆ Integration with third-party access control or intruder devices via XProtect Corporate and Enterprise gives inter-operability for the most comprehensive overview of your security installation



# Product Features

combine alarm management with visual verification.

## XPROTECT CENTRAL CLIENT

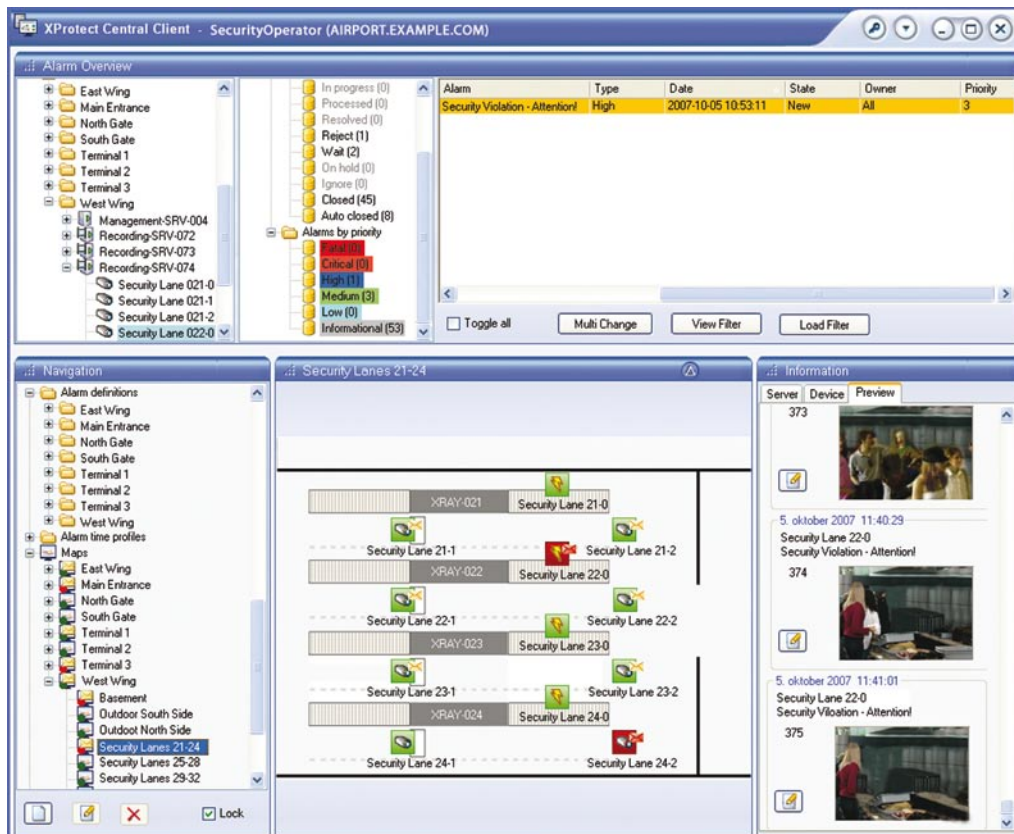
### Interface and Navigation

- ◆ Graphical overview of operational status and alarms from XProtect Corporate and Enterprise servers, network cameras, and external devices like PIR and access control units.
- ◆ Easy navigation using a map-based, hierarchical structure with hyperlinks to other maps, servers and devices, or a tree view for accessing the same entities.
- ◆ Visible/audible alarm and status indications for maps, servers, cameras and devices give instant notification of active incidents.
- ◆ Show, hide and scale interface elements to match operator requirements for assigned tasks.

### Operations Management

- ◆ Enable and disable monitoring of specific servers to avoid false alarms from equipment that is down for longtime maintenance.
- ◆ Acknowledge or suppress operational status messages for either a pre-defined period of time or for a fixed time, e.g. on scheduled maintenance or by operator shift.
- ◆ Multiple operators are able to share the alarm workload from the system.

*XProtect Central provides overviews with visual verification of all incidents; ideal for security installations with multiple sites or buildings.*



# Product Features

## advanced alarm management tools

### Alarm Management

- ◆ Detailed alarm overview with navigation tree offers filtering by entity, state or priority including incident counters for each state and priority.
- ◆ Show and filter incoming alarms on time period, alarm source, ownership, priority and alarm state.
- ◆ 12 alarm states available: New, Open, Assigned, In progress, Processed, Resolved, Reject, Wait, On hold, Ignore, Closed and Auto Closed.
- ◆ 6 user-defined alarm priorities with customizable priority names and colors allow the organization to work with its own terminology and color scheme.



- ◆ Incident management includes reassignment to other operators, change of state for one/multiple/all alarms, change of alarm priority, entering incident-specific log information and suppression of alarms (snooze).
- ◆ Preview, view live or play back recorded video from alarms.
- ◆ Auto close alarms on corresponding event, e.g. motion stopped.
- ◆ Set bookmarks in video for use in Alarm details and corresponding printed incident reports.
- ◆ Generate audit trail reports including bookmarked images by incident.

### System Configuration

- ◆ Enter DNS names or IP addresses for server connectivity.
- ◆ Authenticate as Microsoft® Active Directory accounts to access XProtect Corporate and XProtect Enterprise servers. Optionally, built-in accounts in XProtect Enterprise servers can be used.
- ◆ Create multi-level maps with servers, cameras and external objects.
- ◆ Trigger alarms by events from servers, cameras or external devices and pre-assign them with priority, operator, optional display of live video on remote monitor and link to related cameras.
- ◆ Supported events: Archive Failure, Archive Move Failure, Camera or Server Disabled/Enabled, External Event, Motion Detected/Ended, Camera or Server Not Responding/Respon-

ding and Running Out of Disk Space.

- ◆ Import Microsoft Active Directory users and groups for operator authentication and authorization.
- ◆ Define role-based groups and assign operators to these to achieve different access rights by type or camera.
- ◆ Enhanced event diagnostics offer tracing and verification of the alarm configuration by optionally saving all incoming events from XProtect servers in a log file on the XProtect Central Server.
- ◆ Create navigation section folders to group Alarm definitions, Alarm time profiles and Servers in a hierarchical structure.
- ◆ Use Time profiles for engaging Alarm definitions within predefined time schedules as an alternative to those creating alarms around the clock.
- ◆ Alarm cleanup changes state for all alarms under a specific Alarm definition, or permanently delete them from the database - useful if someone mistakenly adjusts motion detection settings resulting in thousands of false alarms.
- ◆ Plug-in support for third-party systems enables gates, access control units and other external entities to appear in XProtect Central for alarm management and operation.
- ◆ Auto-detection of video destination provides seamless support for XProtect Matrix Monitor and XProtect Smart Client with Matrix plug-in.
- ◆ Trigger custom events from XProtect Central to feedback rule engagement in the XProtect Corporate Server.
- ◆ Start video previewing a number of seconds before the triggering event occurred. This allows the operator to see what happened right up to the event.

### XPROTECT CENTRAL SERVER

- ◆ Client/Server based architecture uses HTTP and XML for data communication.
- ◆ Support for multiple XProtect Corporate Management and Recording servers can be distributed across different sites.
- ◆ Support for multiple XProtect Enterprise Master and Slave servers in several remote locations.
- ◆ Central logging of incoming alarms and system information in Microsoft SQL Server Express database.
- ◆ The Central Server runs as a Windows Service.

# Milestone Systems

## The Open Platform IP Video Software

### MINIMUM SYSTEM REQUIREMENTS:

#### **XProtect Central Server:**

**CPU:** Intel® Pentium® 4 minimum 2.4 GHz (Intel® Core™2 Duo or higher recommended)

**RAM:** Minimum 512 Mbyte (1 GB or higher recommended on Microsoft® Windows Vista™)

**Network:** Ethernet (100 Mbit recommended)

**Graphics Card:** Any supported by Microsoft® Windows®

**Hard disk type:** Any supported by Microsoft Windows

**Hard disk space:** Minimum 100 Mbyte free (depends on number of servers and alarm settings)

**OS:** Microsoft Windows XP Professional (32 bit or 64 bit\*) and Windows Server 2003 (32 bit or 64 bit\*), Windows Vista Business (32 bit or 64 bit\*), Windows Vista Enterprise (32 bit or 64 bit\*) and Windows Vista Ultimate (32 bit or 64 bit\*)

**Software:** Microsoft .NET 2.0 Framework and Internet Information Server (IIS) 5.1 or newer

#### **XProtect Central Client:**

**CPU:** Intel Pentium 4 minimum 2.4 GHz or higher

**RAM:** Minimum 1 GB (2 GB recommended on Windows Vista)

**Network:** Ethernet (100 Mbit or higher recommended)

**Graphics Card:** AGP or PCI-Express, minimum 1024 x 768 (1280 x 1024 recommended), 16 bit colors

Hard disk space: Minimum 50 Mbyte free

**OS:** Microsoft Windows XP Professional (32 bit or 64 bit\*) and Windows Server 2003 (32 bit or 64 bit\*), Windows Vista Business (32 bit or 64 bit\*), Windows Vista Enterprise (32 bit or 64 bit\*) and Windows Vista Ultimate (32 bit or 64 bit\*)

**Software:** Microsoft .NET 2.0 Framework and DirectX 9.0 or newer

\* Running as a 32 bit service/application.

### COMPANY PROFILE:

Milestone is the world market leader for open platform IP video management software. The XProtect products are easy to use, robust and proven in operation at 25,000 customer installations. Supporting the widest choice in network hardware and integration with other systems provides best-of-breed solutions to video enable your business, reduce costs, optimize processes, protect assets and ultimately increase value in your company's products and services. Milestone solutions are sold through authorized partners in more than 60 countries.

### PRODUCT RANGE:

**XProtect Corporate** is a premium multi-server video surveillance system with centralized management of unlimited cameras in numerous locations including full-fledged client access.

**XProtect Enterprise** is a comprehensive multi-server video management system running unlimited cameras and including full-featured access client.

**XProtect Professional** is an advanced single server video management system running up to 64 cameras per server including full featured client access.

**XProtect Basis+** is an expanded single server video management system running up to 25 cameras per server including full featured client access.

**XProtect Transact** is an add-on product that handles loss prevention through video evidence combined with time-linked Point of Sale (POS) or Automated Teller Machines (ATM) transaction data, integrated with XProtect Corporate, Enterprise, Professional or Basis+.

*Company and product names mentioned are registered trademarks of their respective owners. Milestone Systems reserves the right to change the specification without prior notice.*